

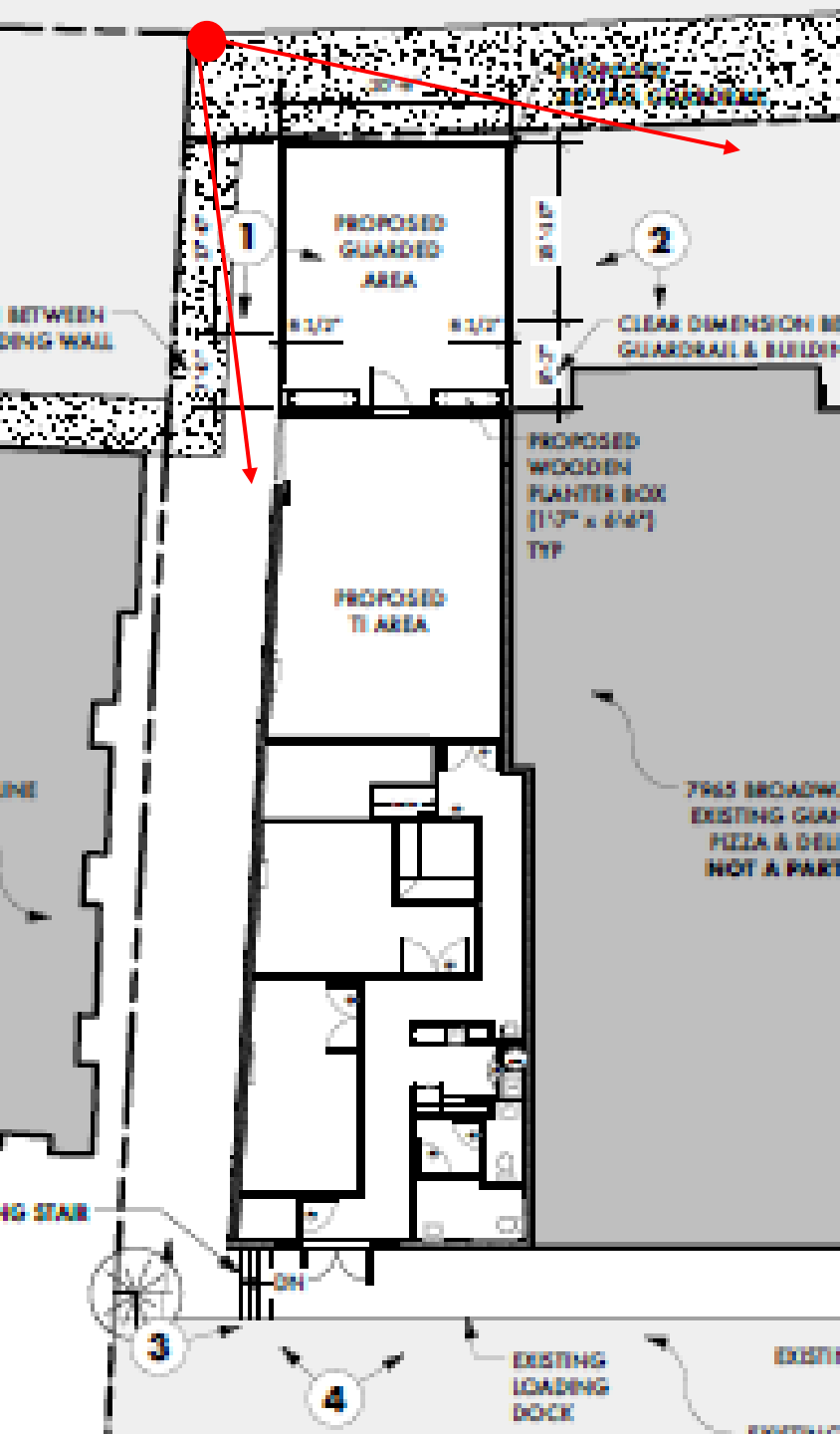
7963 Broadway

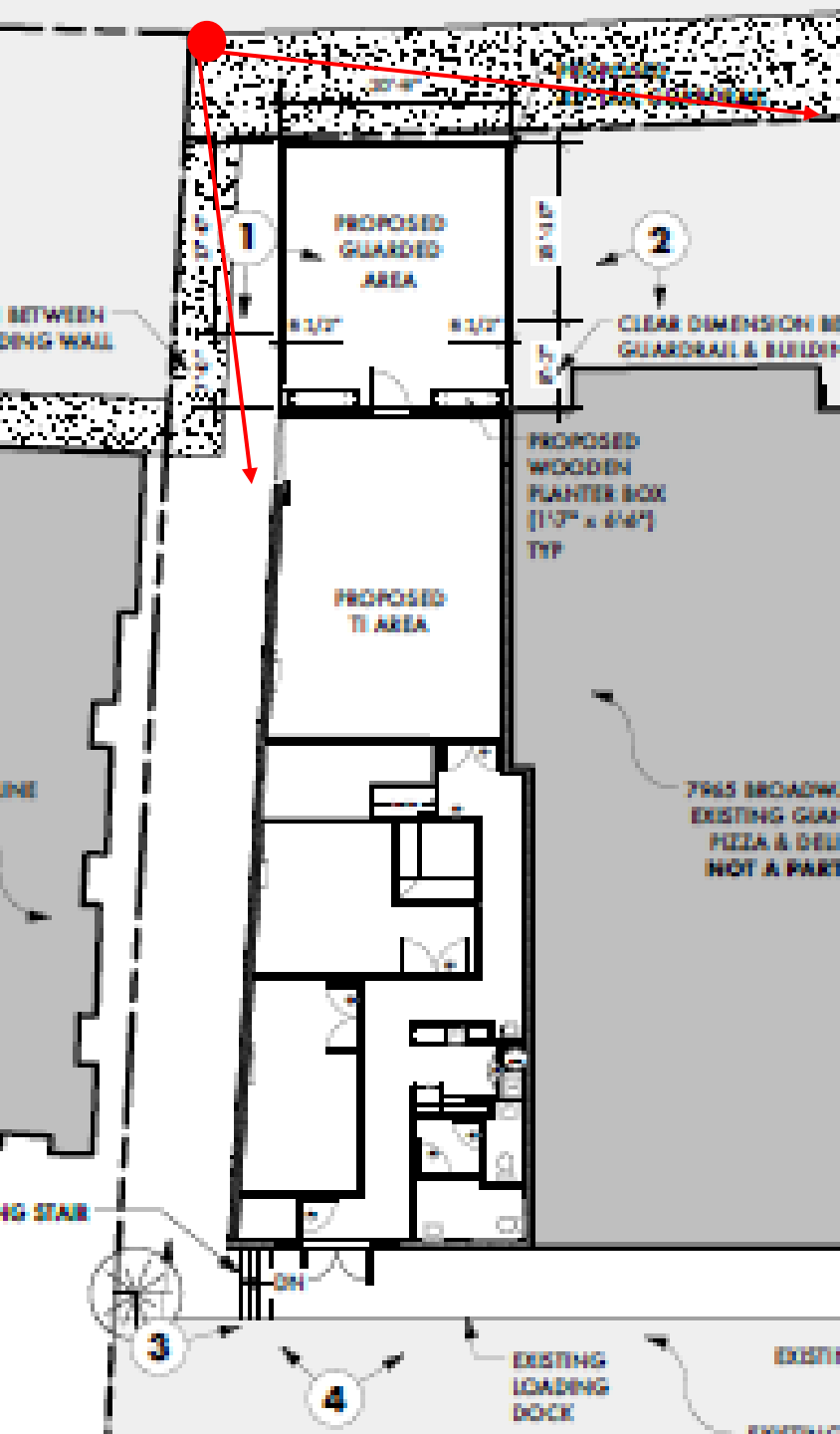
Renderings with comments as of 7/27/24

Notes:

- Maximum capacity is 49 according to fire code
- We will have security/alarm system

Current View from the front right





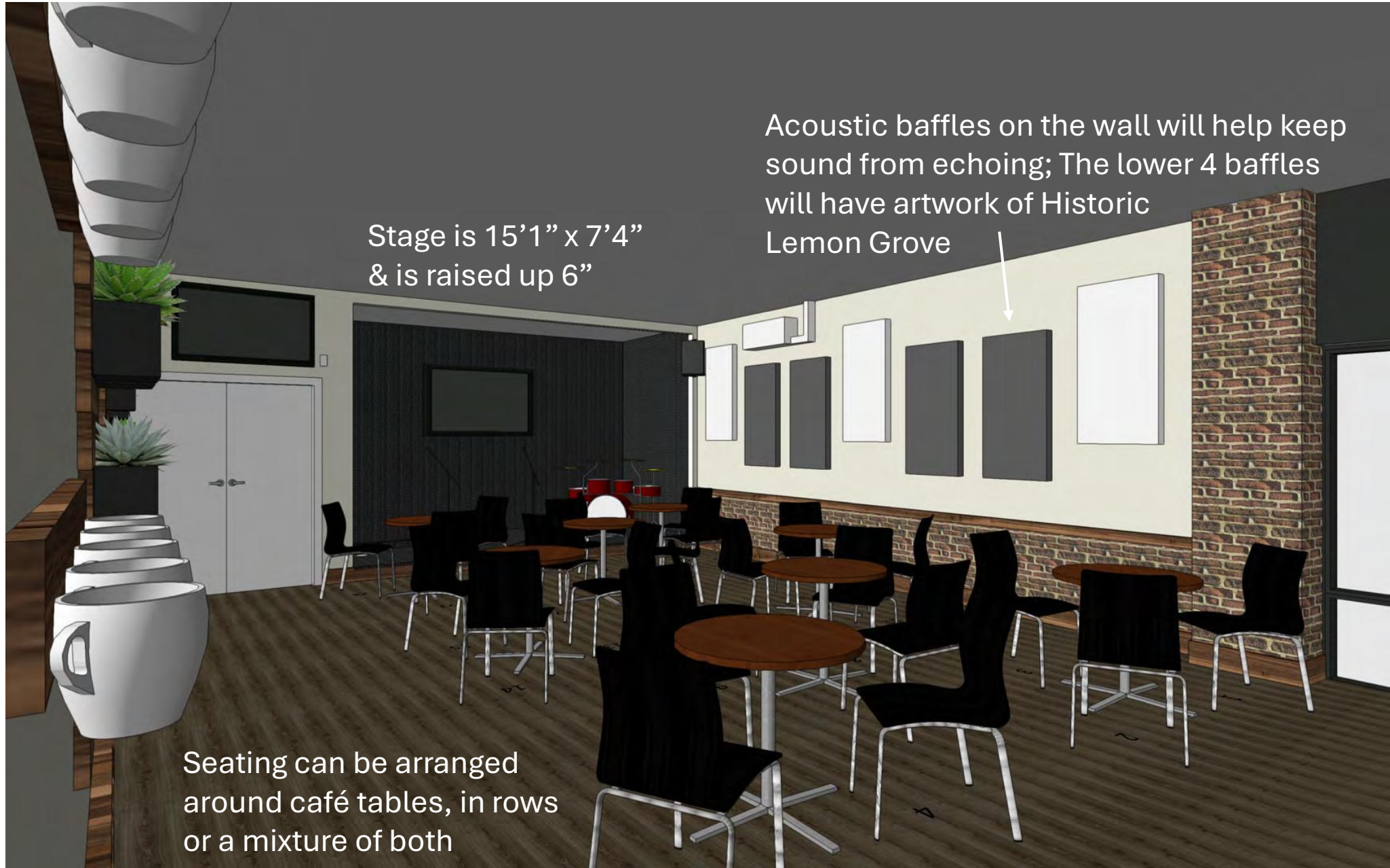
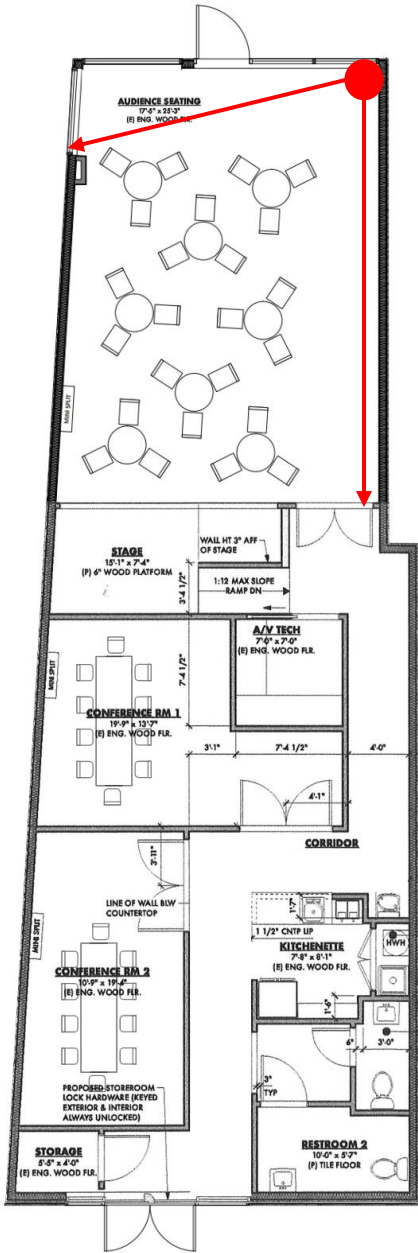
Proposed View from the front right.

- Proposed 3-Sided Guardrail is 42" tall & is on 3 sides of 21' x 24' area to Provide safety for outdoor neighborhood events
- The land in front is part of the 7963 Broadway property
- A 6' space between the building & guardrail is open for a walkway
- Guardrails will be designed so that they can be removed if needed
- Protected Mural is not pictured



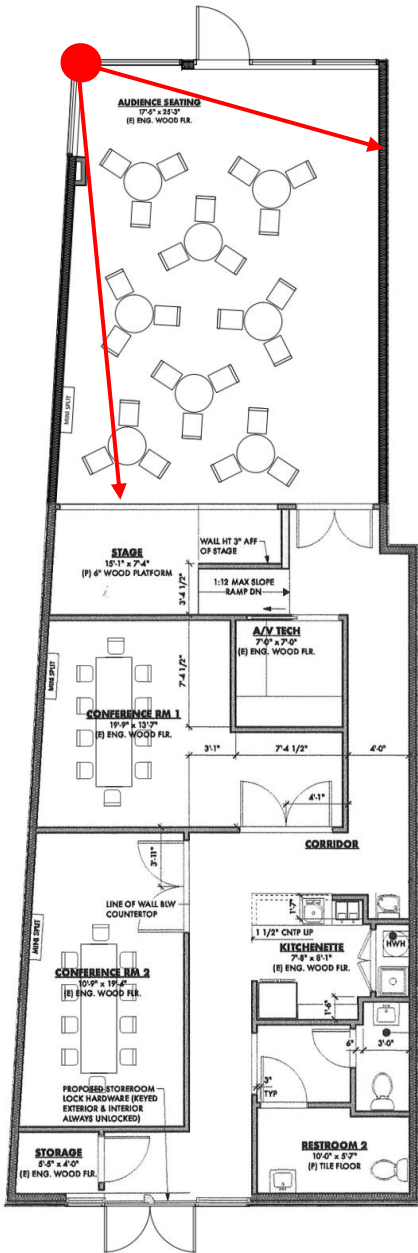
Audience Seating View from the back left

- Seating Area roughly 19'6" X 29'3"
- Seating can be arranged around café tables, in rows or a mixture of both



Audience Seating View from the back right

- Seating Area roughly 19'6" X 29'3"
- Double doors lead down the hallway



“Pay-it-Forward Chalkboard” where we write the ways that people’s donations help the community (see sample on next page)



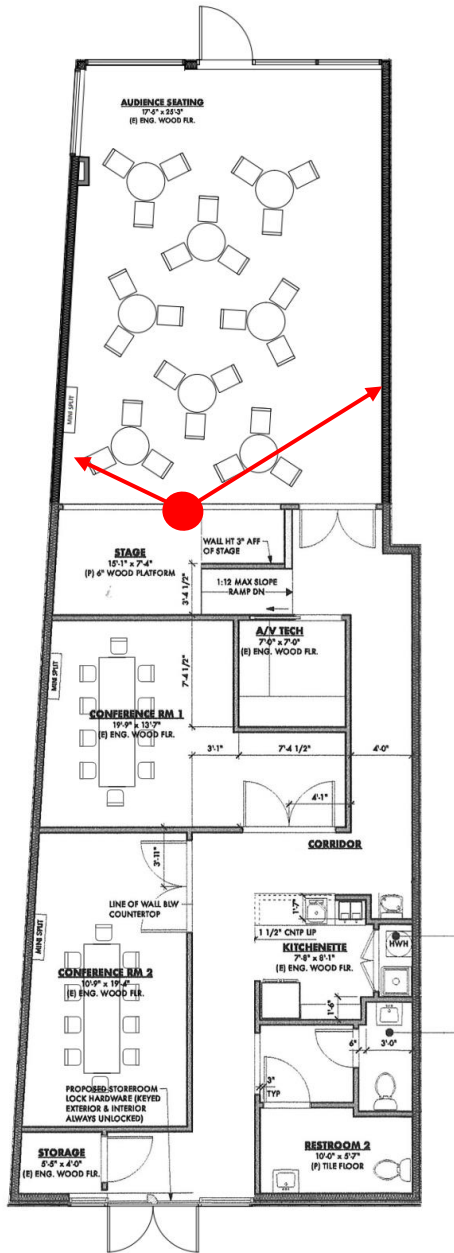
Community members will be invited to write their name on a coffee mug to be hung on the wall

Very Rough Mock up Sample



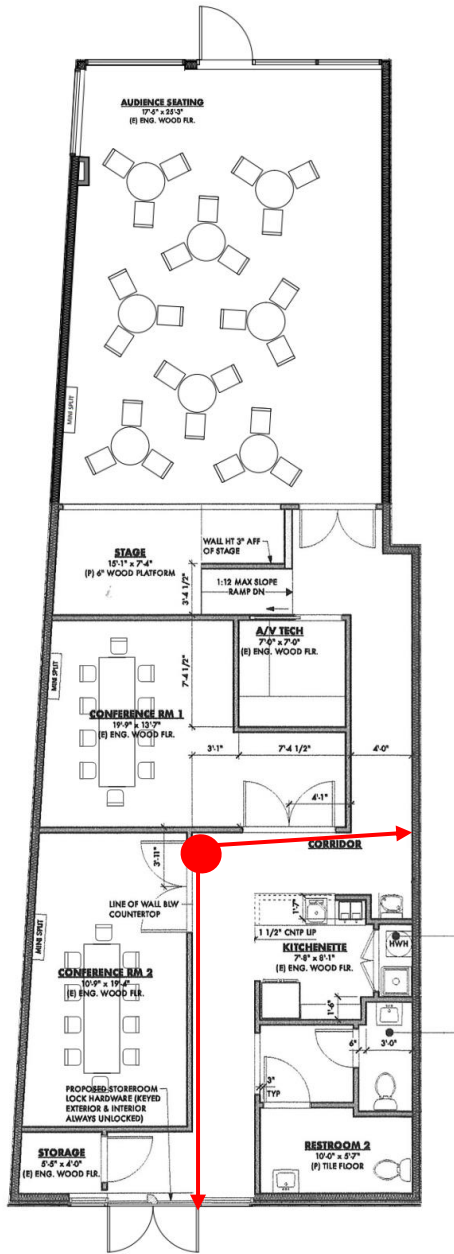
Audience Seating View from the stage looking towards the front door & windows

- Stage is 15'1" x 7'4" & is raised up 6"

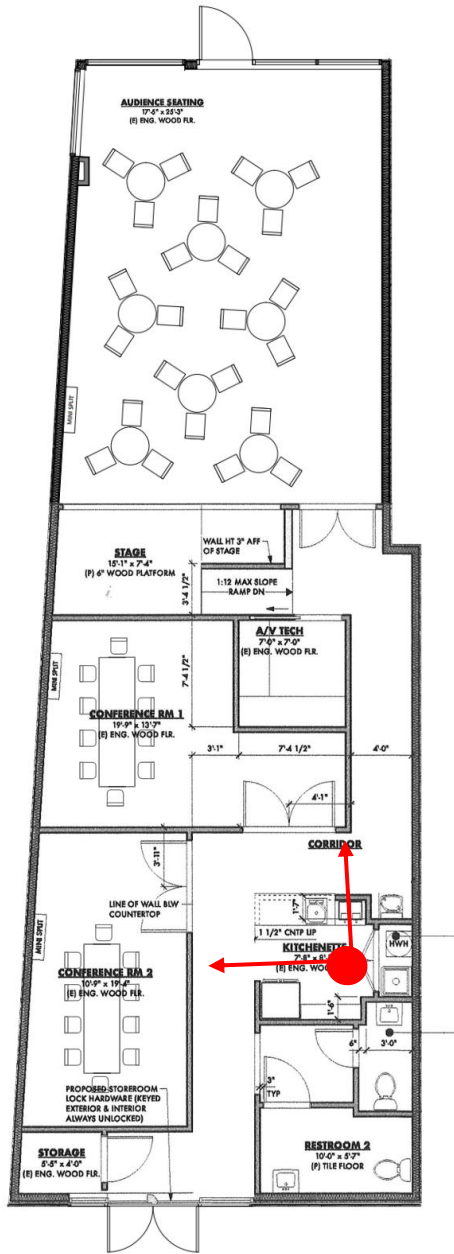


Kitchenette

- Refrigerator, sink, microwave, coffee maker (no stove)
- Everything is ADA compliant
- In the utility closet is the Water Heater & a required Utility/Mop Sink

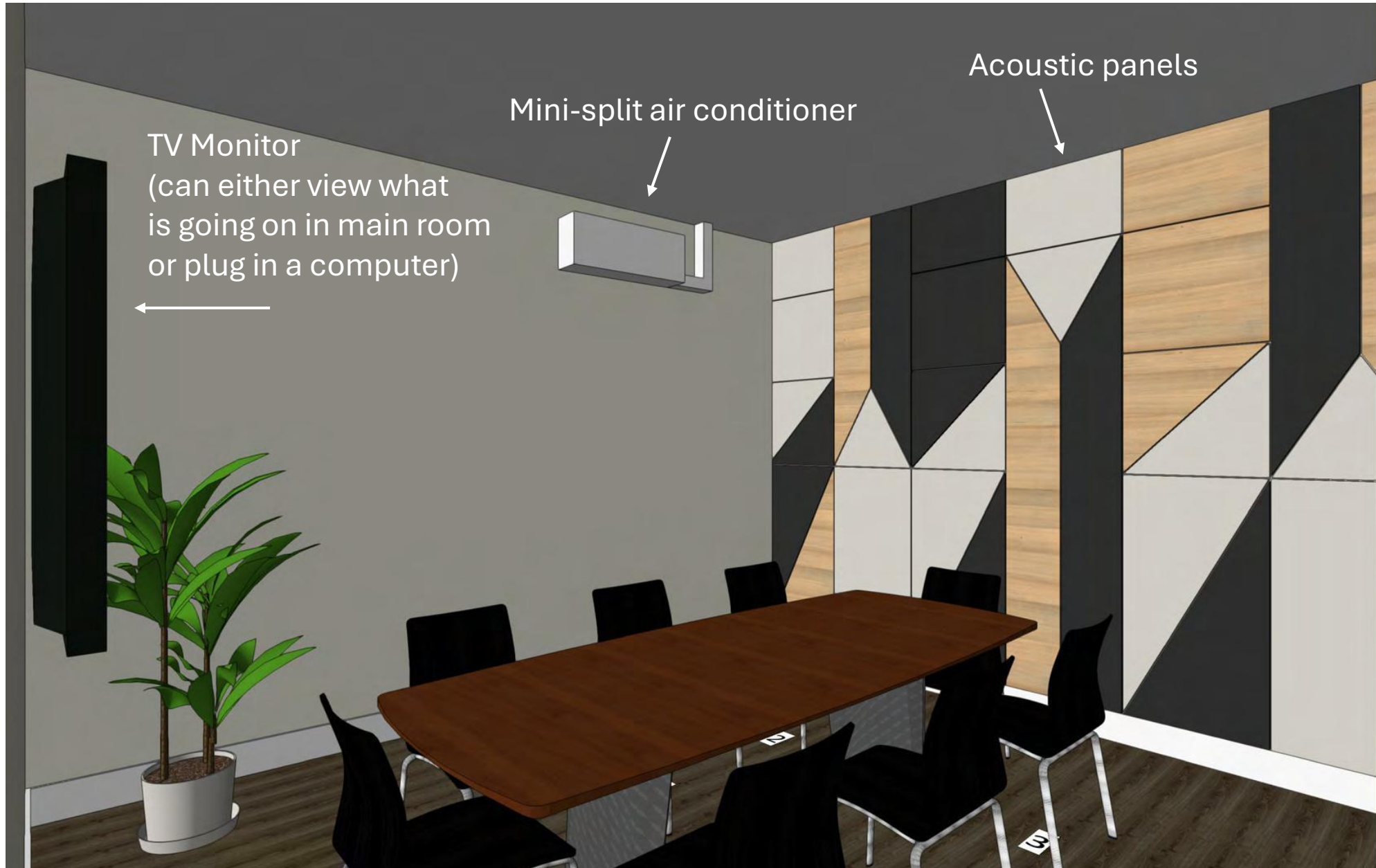
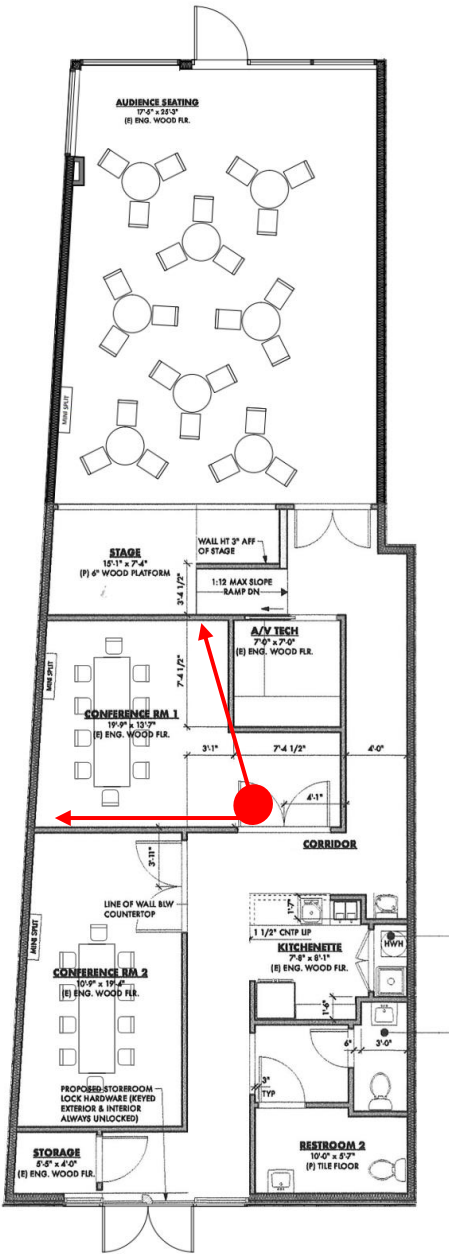


Doors to Conference Rooms from vantage point of the kitchenette



Conference Room #1

- 19'9" x 13'7"
- During services this room will be for Elementary age children



Conference Room #2

- 10'9" x 19'4"
- During worship services this room will be for babies & small children

